

Saskatchewan Accumulated Corn Heat Units

Average CHUs for Silage Production

Note: Local topography, soil type, and surrounding vegetation can significantly alter microclimates. The daily CHU's were calculated by the following equation:

$$CHU = [1.8(T_{min}-4.4) + 3.3(T_{max}-10) - 0.084(T_{max}-10)^2] / 2$$

The seasonal CHU was calculated by a sum of all the daily CHU from May 15 until the first -3°C frost. Data from 1980-2005 was used to calculate the average.

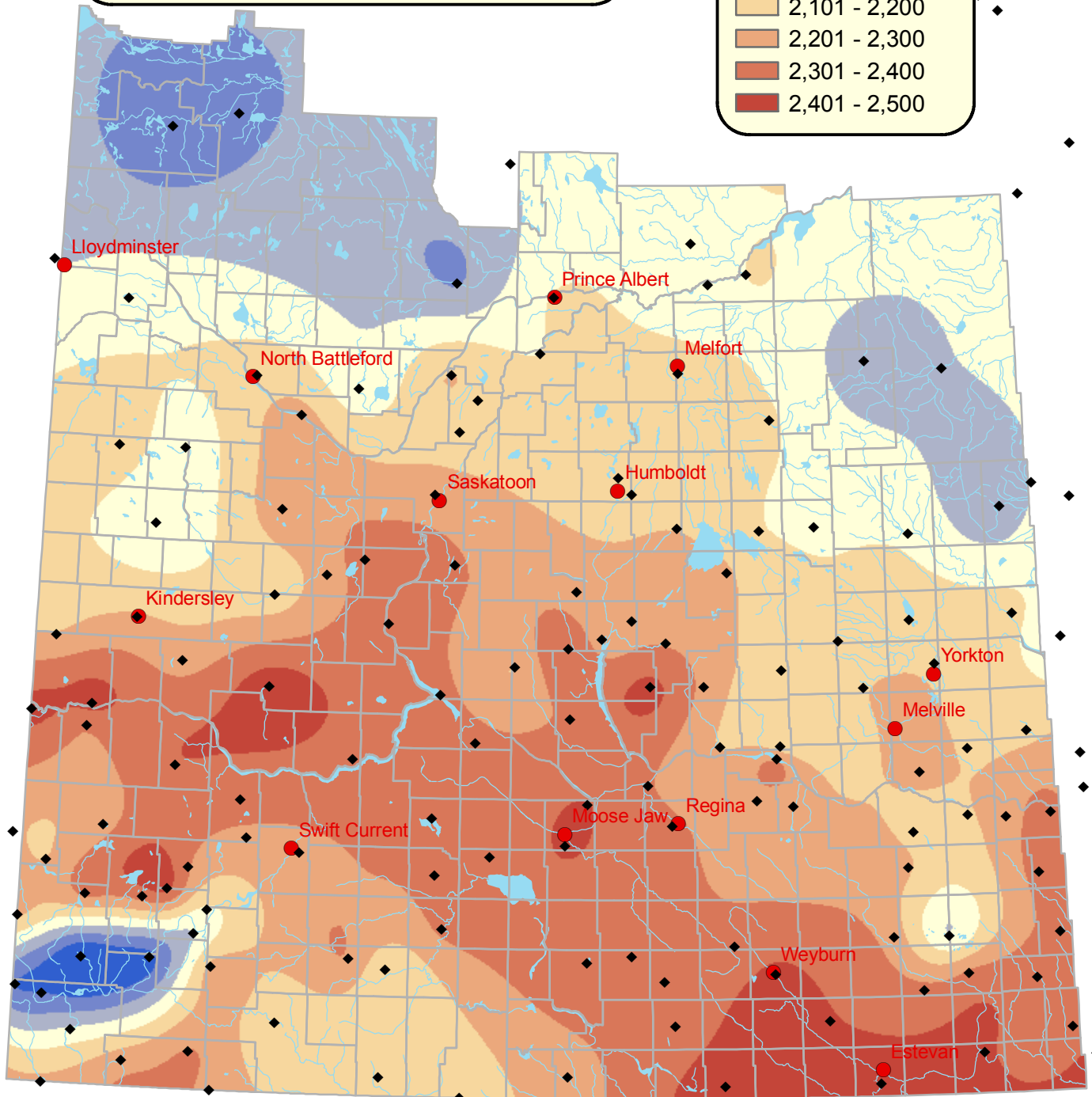
For further information contact Sarah Sommerfeld, Irrigation Agrologist at (306) 867-5521 or Sarah.Sommerfeld@gov.sk.ca.

Legend

◆ Weather Station

Corn Heat Units

- 1,601 - 1,800
- 1,801 - 1,900
- 1,901 - 2,000
- 2,001 - 2,100
- 2,101 - 2,200
- 2,201 - 2,300
- 2,301 - 2,400
- 2,401 - 2,500

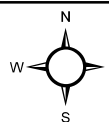


Saskatchewan
Ministry of
Agriculture

0 25 50 100 150 200



Kilometers



Data source:
Weather station data - Environment Canada
Corn heat unit values - Irrigation Branch

Prepared by: Geomatics Services Date: April 12, 2010